

✕ *Un día en el monte* ✕

Mediator devices for the reconnection with the territory

Iñaki Cancillo Mora // University of Alicante (Spain)

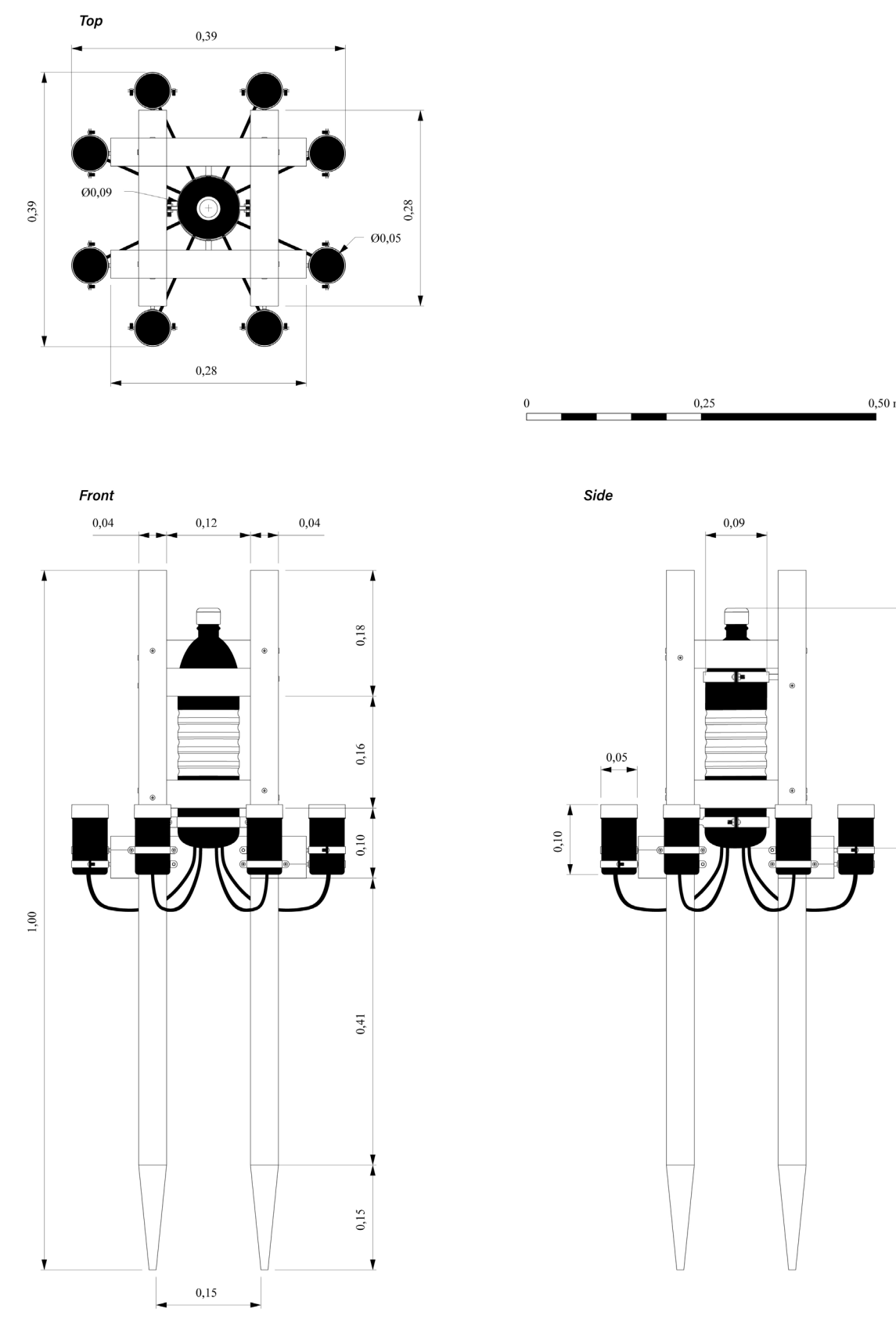
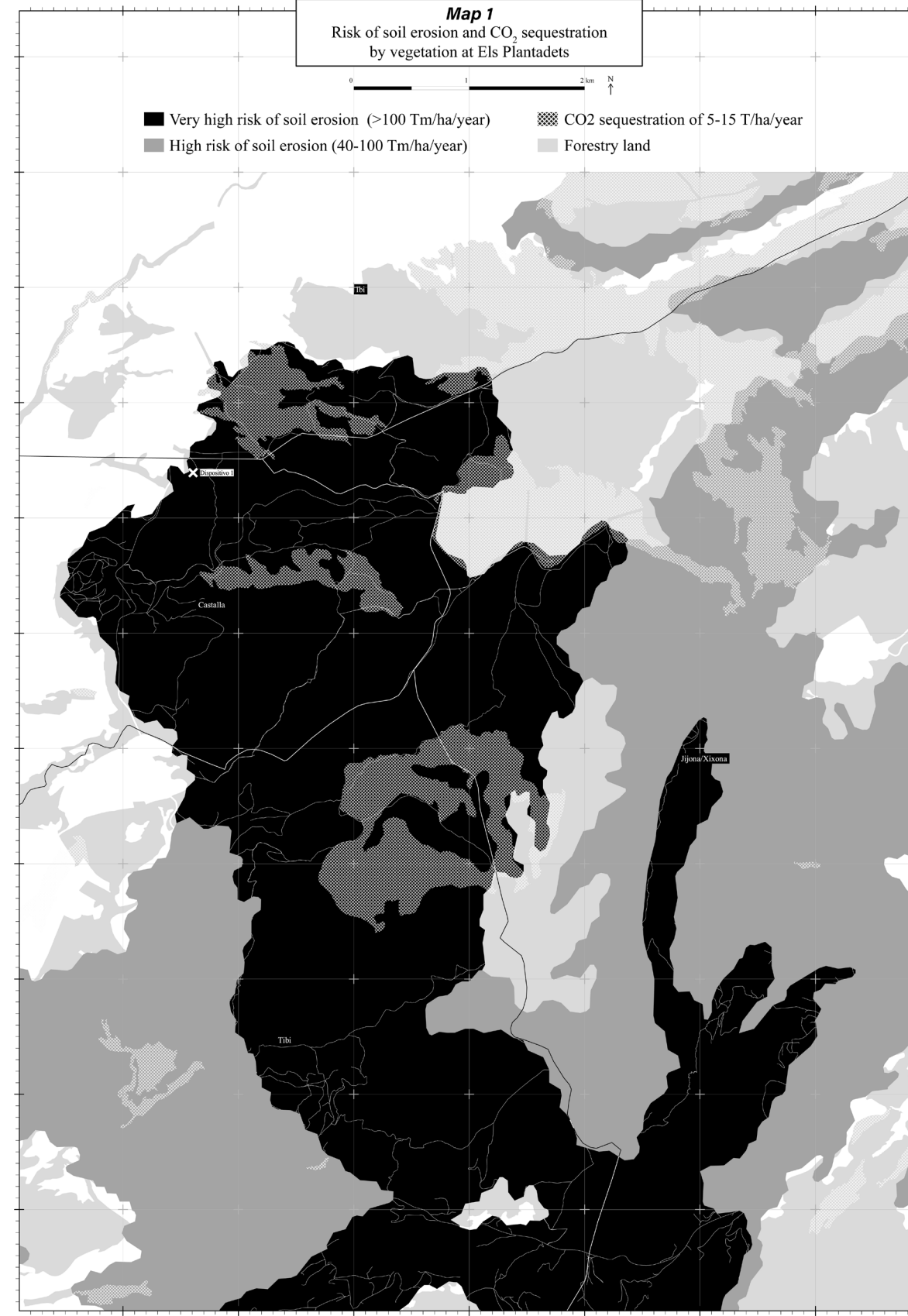
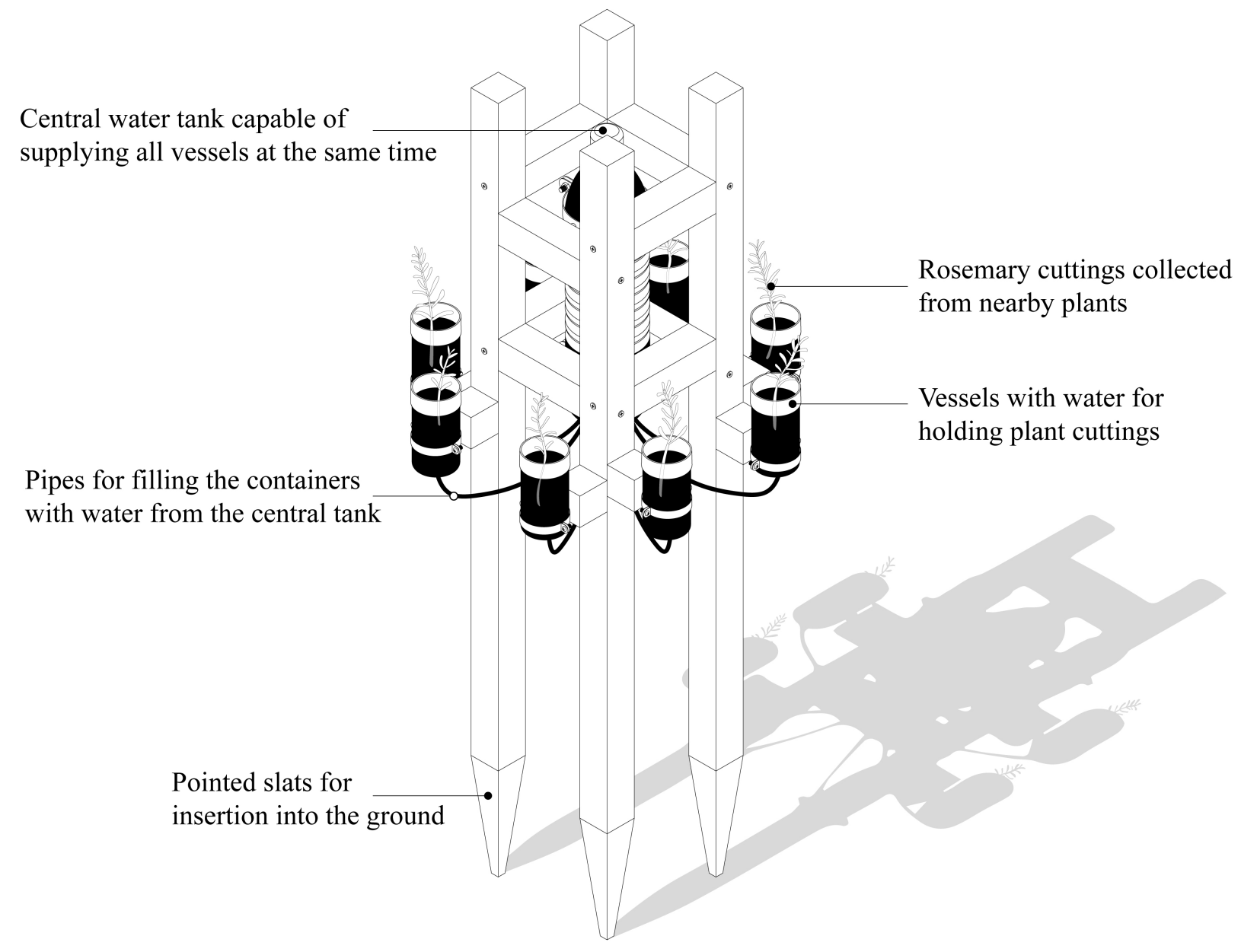
Un día en el monte is proposed as a tool for reconnecting with the territory through a methodology of designing devices built and deployed in the environment in which they are inserted. These artefacts are conceived as part of a situated practice that builds knowledge from the minor wisdom that has emerged as the project has progressed and flowed through different perspectives of approaching the territory and the landscape. It reconfigures the role of the architect as a mediator between different human and non-human agencies and investigates the ways in which design can articulate the new, kinder networks of interaction that will make up the complex systems of future coexistence.

The project takes place in the mountains near the city of Alicante, mainly in Els Plantadets, between the municipalities of Tibi, Xixona, Castalla and Ibi. I started by walking around the territory and gradually getting to know the plants that inhabit the land in order to design devices related to the functioning of ecosystems and, thus, share the

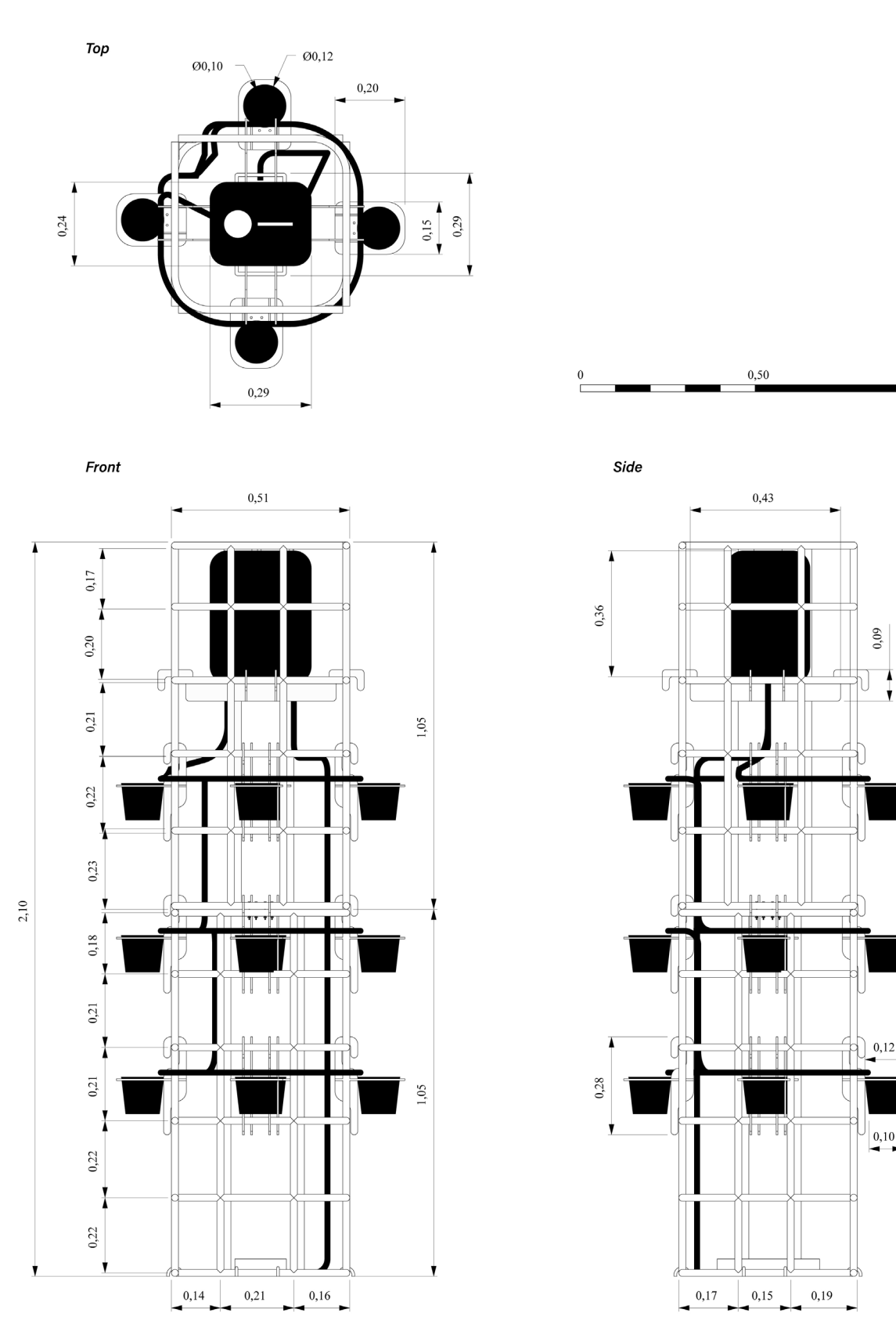
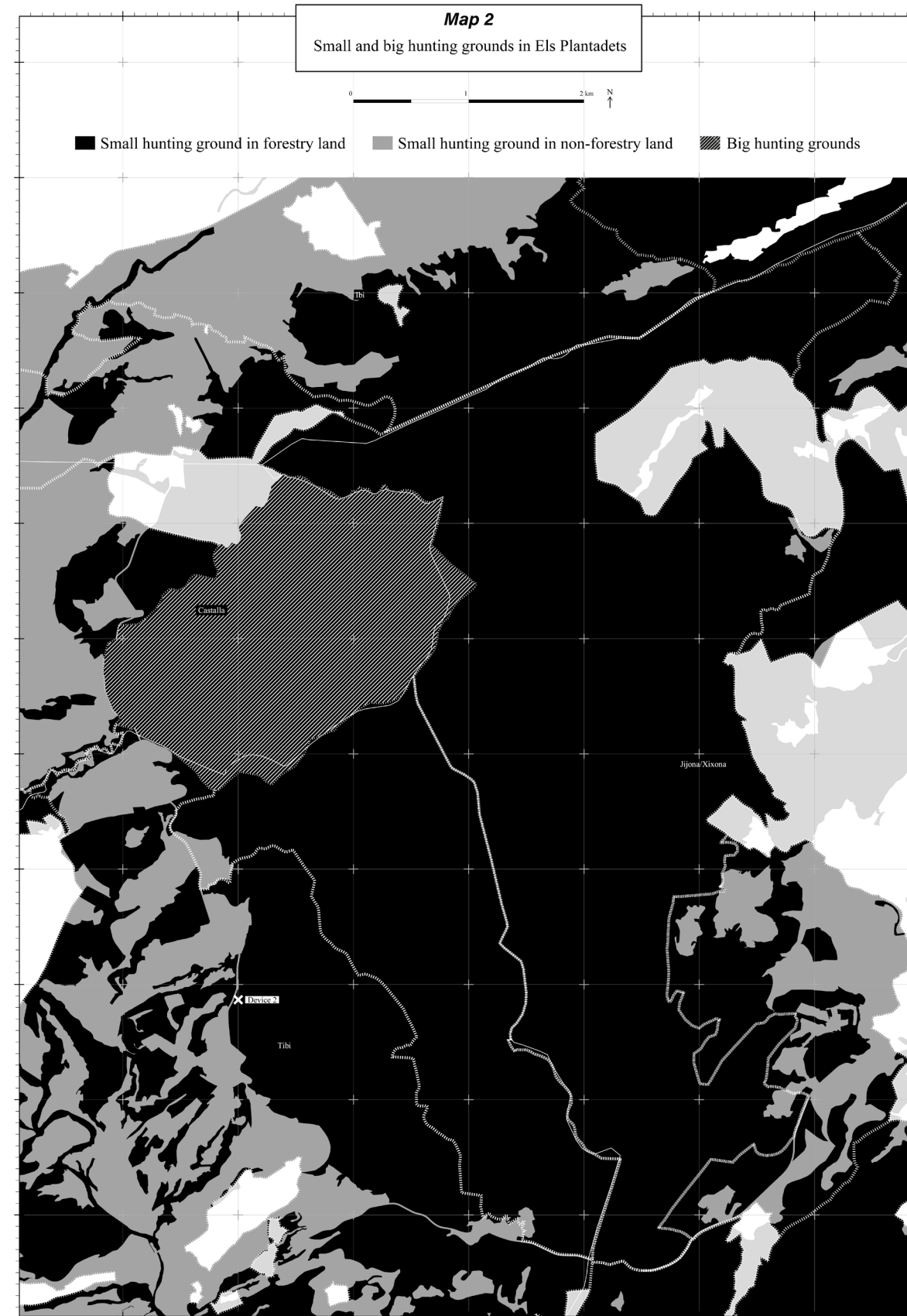
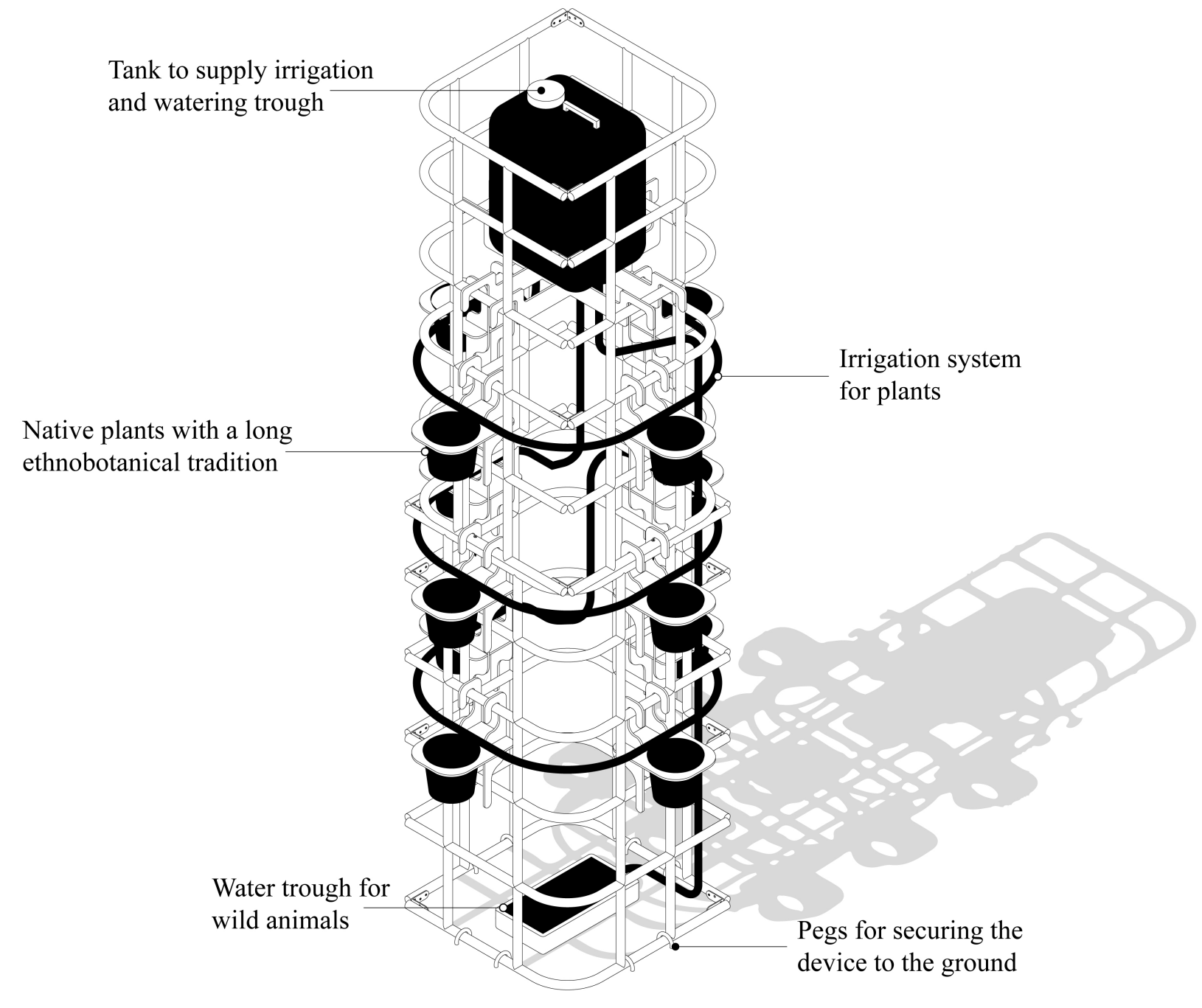
controversial relationships that define the natural landscape of Alicante. To do this, I created 4 different devices that I placed in the forest and remained there for months to interact with the environment and be part of it. As a result, I was able to collect information about how the devices had influenced and been affected by plants, birds, rain, wind, hikers, institutions, insects, organisations... The whole process and data have been recorded and presented in drawings, photographs, videos, diagrams and the devices themselves. This panel shows the devices, including the diagram of their components, the maps that introduce the subject they address, their plans, and the photographs of the built and implanted state in Els Plantadets.

In conclusion, *Un día en el monte* explores other possibilities of developing architecture and design to insert itself into ecosystems and propose other ways of planetary remediation from action grounded in the nearby territory.

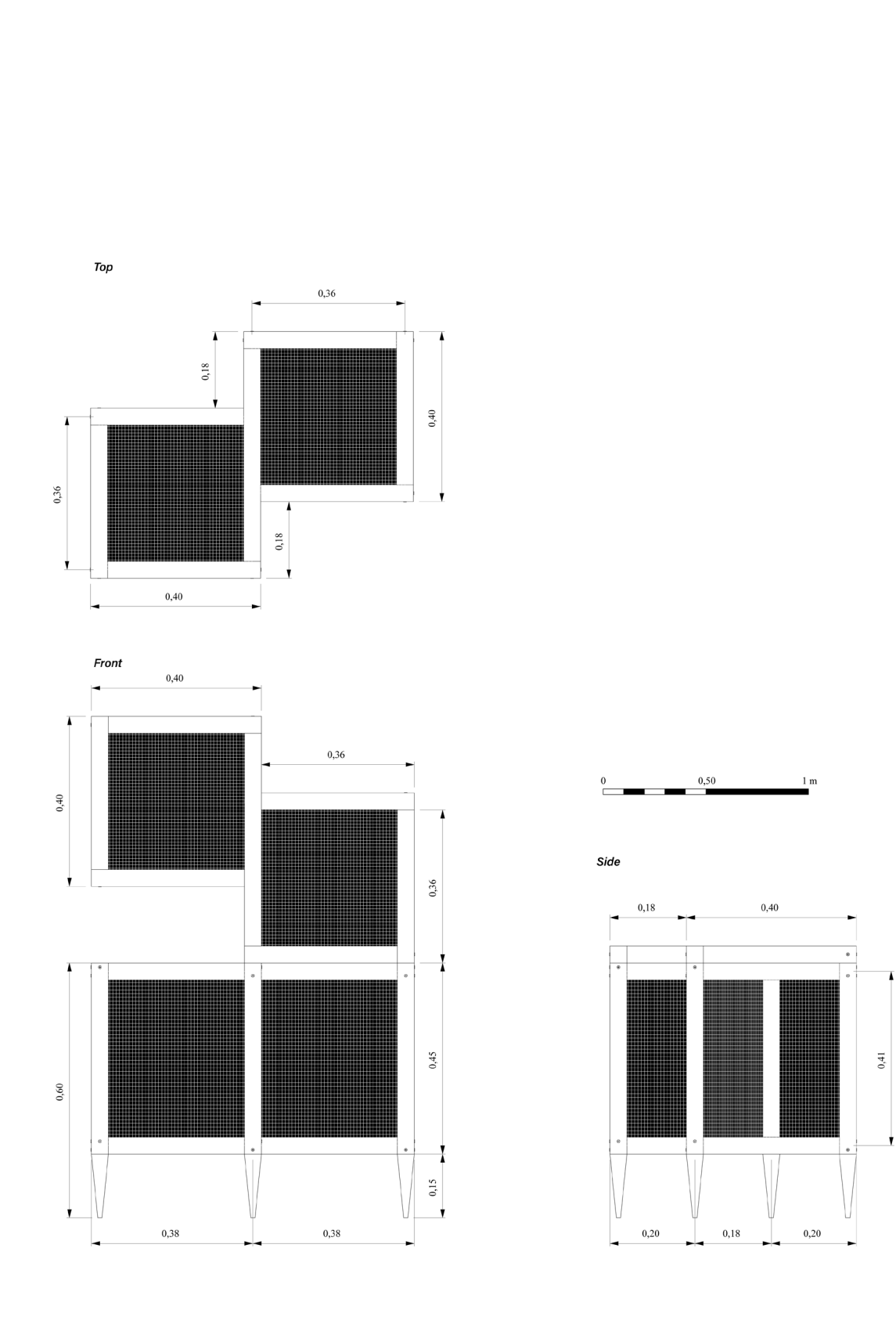
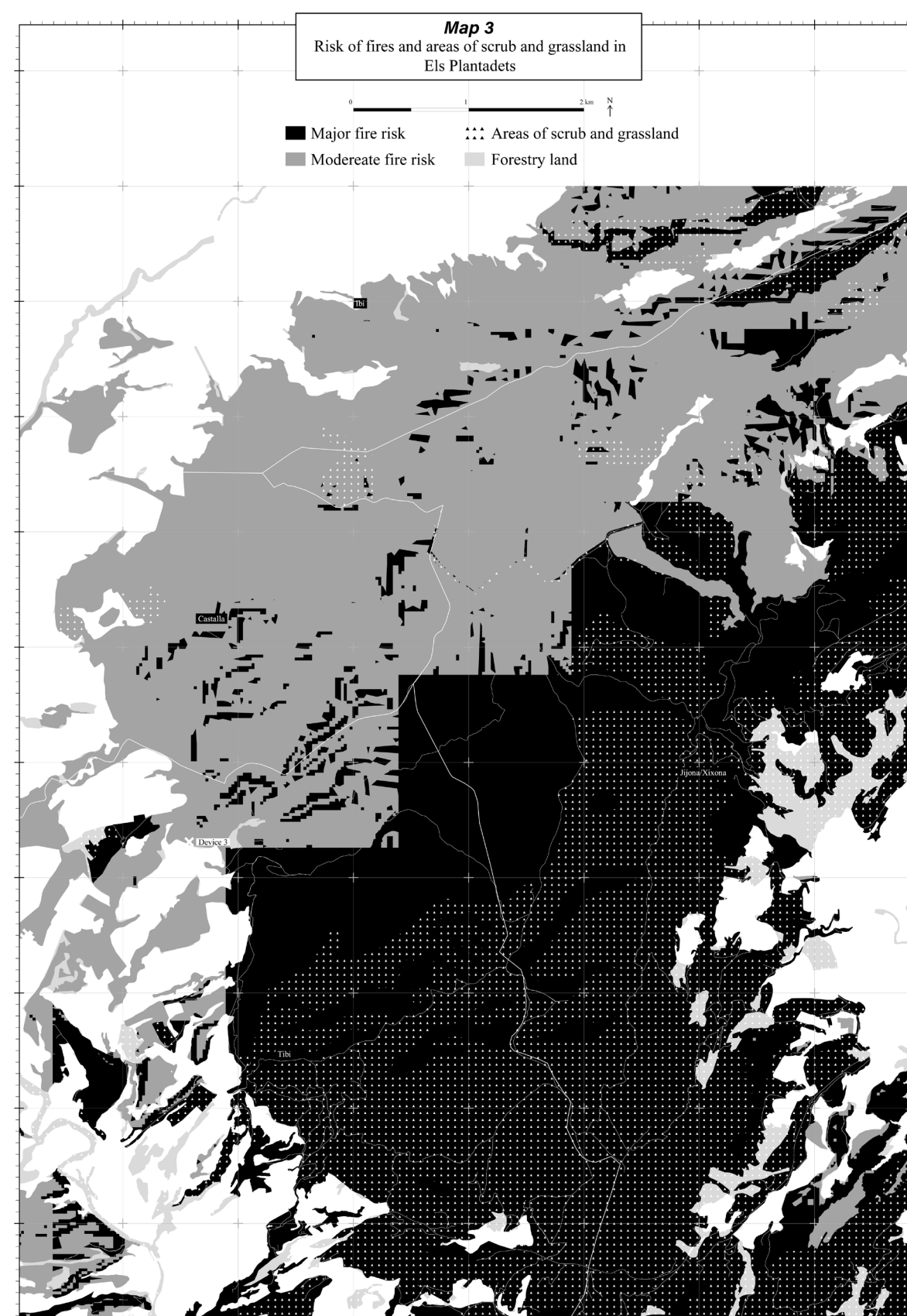
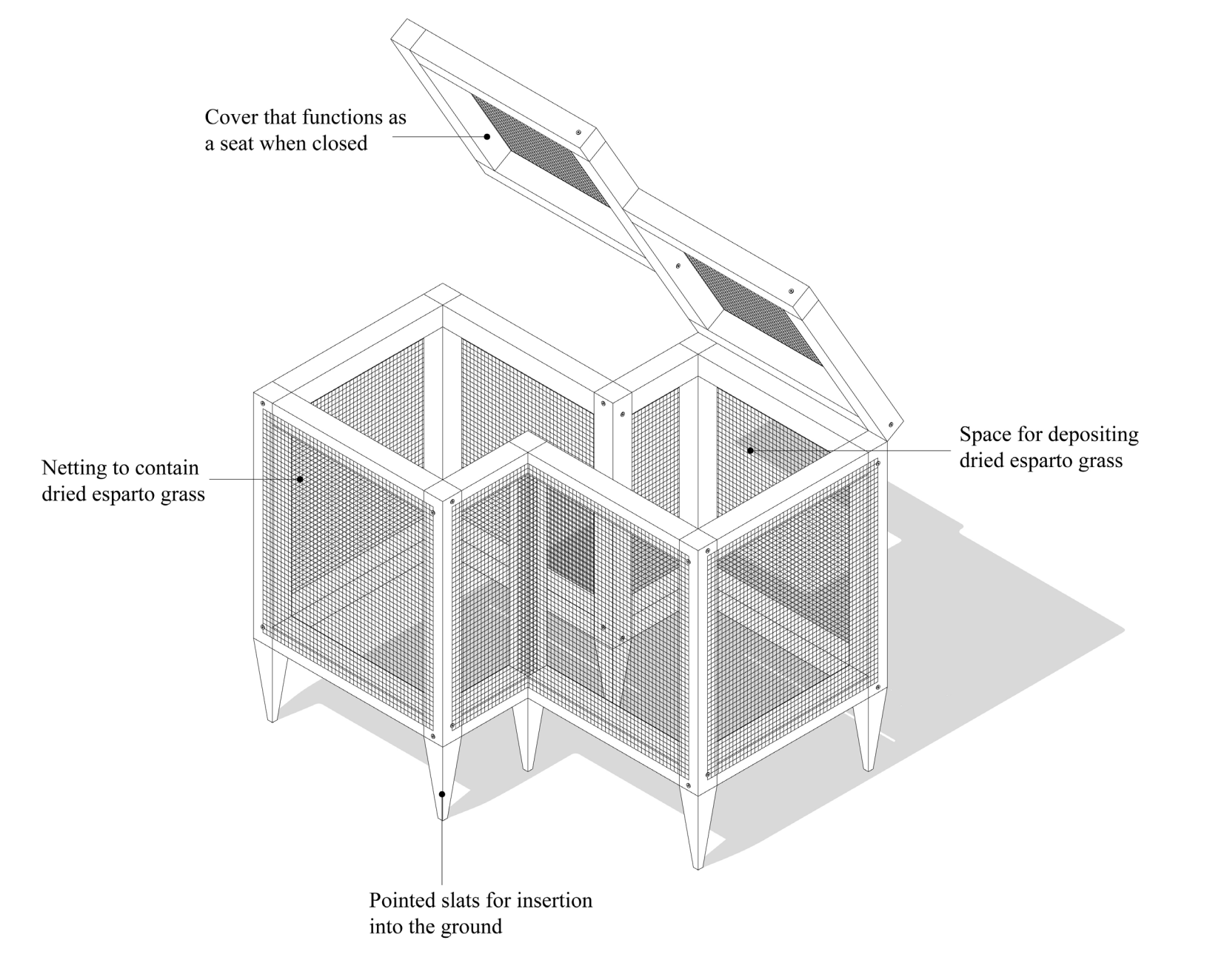
Device 1
On-site cutting centre for the propagation of mountain plants



Device 2
Hunter and reconciler drinking trough for animals and plants of the forest



Device 3
Forest dry plant storage and composting seating space



Device 4
Flying and regenerating goats on the droveways of Els Plantadets

