

VISIONS FOR NORTHOLT

A FUTURE NEIGHBOURHOOD 2030 STRATEGY CONNECTING COMMUNITIES, NATURE AND ECONOMIES.

Sara Perera-Hammond, Sophie Beagles, Conor Morris, Susannah Littlewood, Henry Chafor, Amie Norries, Dina Tsuru

London Borough of Ealing, Trees for Cities, Viking Primary School, Urban Edible Gardens



MAYOR OF LONDON



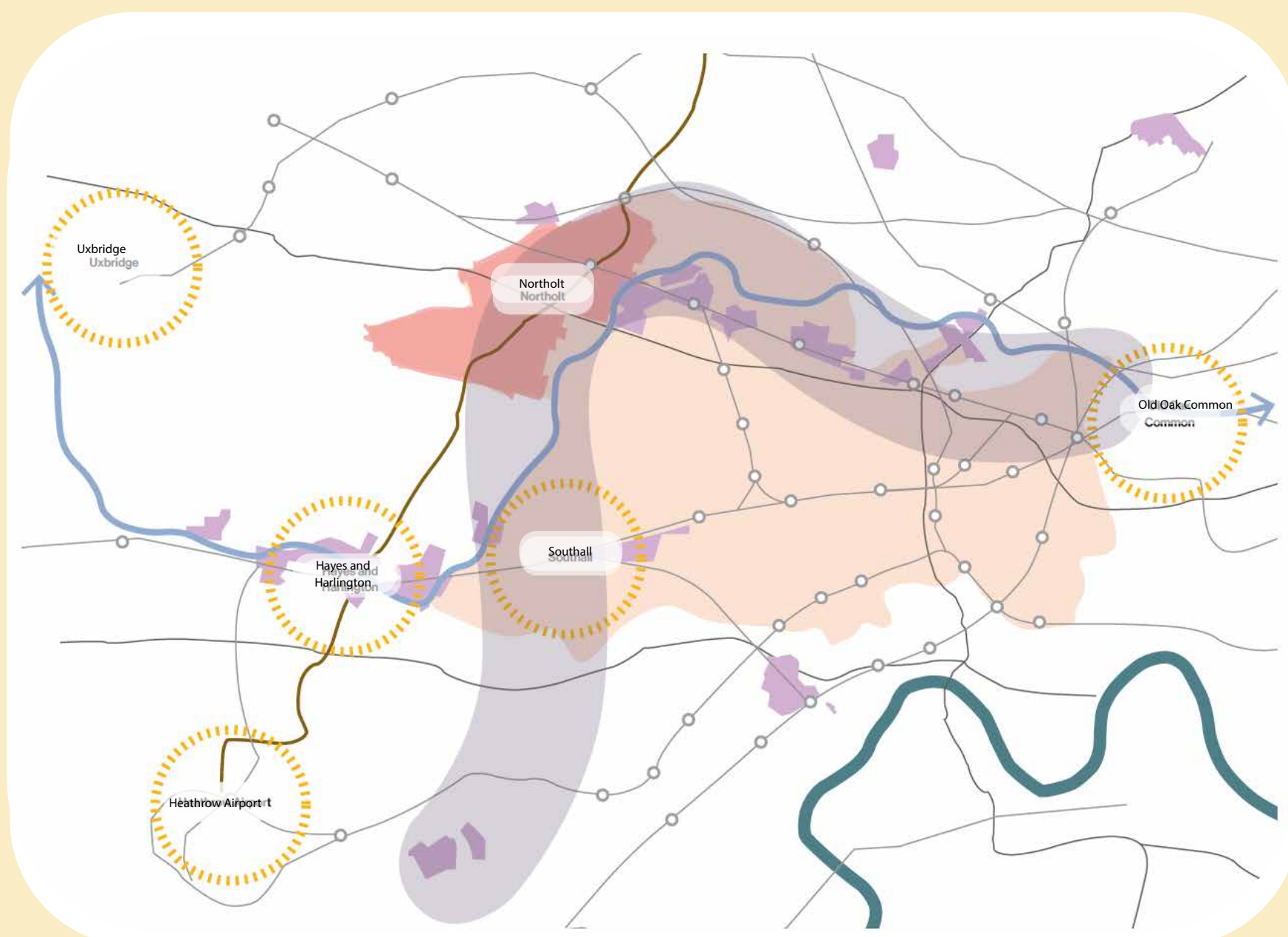
visionsfornortholt.co.uk

INTRODUCTION

A Future Neighbourhood 2030 strategy for Northolt has been developed through the funding programme launched by the Mayor in 2021 to help support a green recovery from the COVID-19 pandemic. The objectives are to tackle some of London's defining environmental challenges, including the climate emergency and toxic air quality, whilst creating jobs, developing skills and supporting a just transition to a low carbon circular economy.

Northolt is a suburban neighbourhood in the London Borough of Ealing, in West London. It suffers with high levels of deprivation, with large areas in the top 20% most deprived nationally. Some areas suffer from high climate vulnerability, poor air quality and high reliance on car usage with 1 in 3 local journeys made by car.

The strategy is about exploring locally-led ideas to tackle the climate and ecological crisis in Northolt. It pilots collaborative practices and community-led approaches to deliver against Ealing Council's Climate and Ecological Emergency Strategy and is all about empowering local communities to drive forward change and shape their neighbourhoods and is a concept type for future action.



Northolt location within the borough and in relation to key employment areas
Data Source: Northolt's top employment sectors, Northolt 20-minute Neighbourhood Framework

COLLABORATIONS

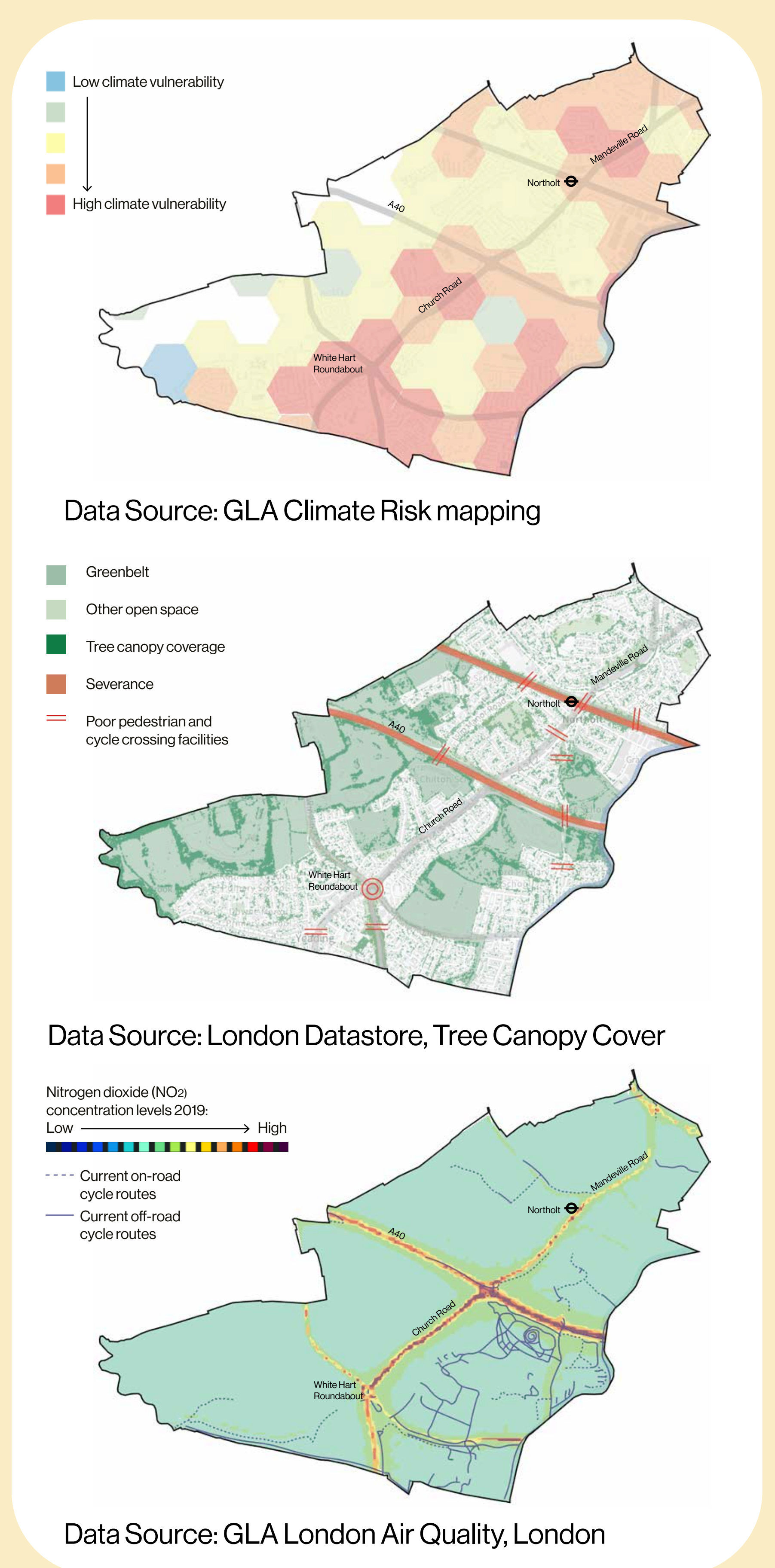
Ealing Council partnered with a range of diverse local groups to co-produce the strategy this included Trees for Cities- a local greening charity, Building Bridges- a healthy eating and growing community group and Viking Primary School.

Co-production of the strategy involved in depth analysis of the local neighbourhood and 1-1 interactions with the local community to find out the existing issues and needs which resulted in securing an early buy-in from partners.

RESEARCH

A mix of social economic data and community feedback was gathered and analysed to understand the key local challenges and opportunities in Northolt.

This includes ideas and feedback from over 300 local people who fed into a community-led vision for the future of Northolt through the Visions for Northolt programme. Ensuring that Northolt is a clean and resilient environment was highlighted as a key priority to local people.



Data maps show high levels of climate vulnerability to the impacts of heat and flooding particularly to the south of Northolt. Whilst there are a number of parks, access is low owing to severance from large road infrastructure. These corridors fail to meet NO2 mean objectives and local people report pollution as a key concern. Car reliance is higher due to poor public transport connectivity and lack of active travel infrastructure.

STRATEGY

The strategy to tackle some of these issues results in the 'Green Ring', an active travel route which will connect green spaces across Northolt promoting healthy lifestyles and walking and cycling through improved crossing points, wayfinding, places to rest and a supporting behavioural change programme.

The 6.3km circular route connects six parks in Northolt; Lime Tree Park, Islip Manor Park, Belvue Park, Smiths Farm, Northala Fields and Rectory Park.

It forms part of a wider active and sustainable travel network for Northolt and will improve access to green spaces. Route wide interventions will include new street furniture, planting, crossing points, signage, resurfacing and lighting. These interventions will make active travel safer and more pleasant helping to reduce reliance on vehicles and bring a number of greening interventions to increase climate resistance.

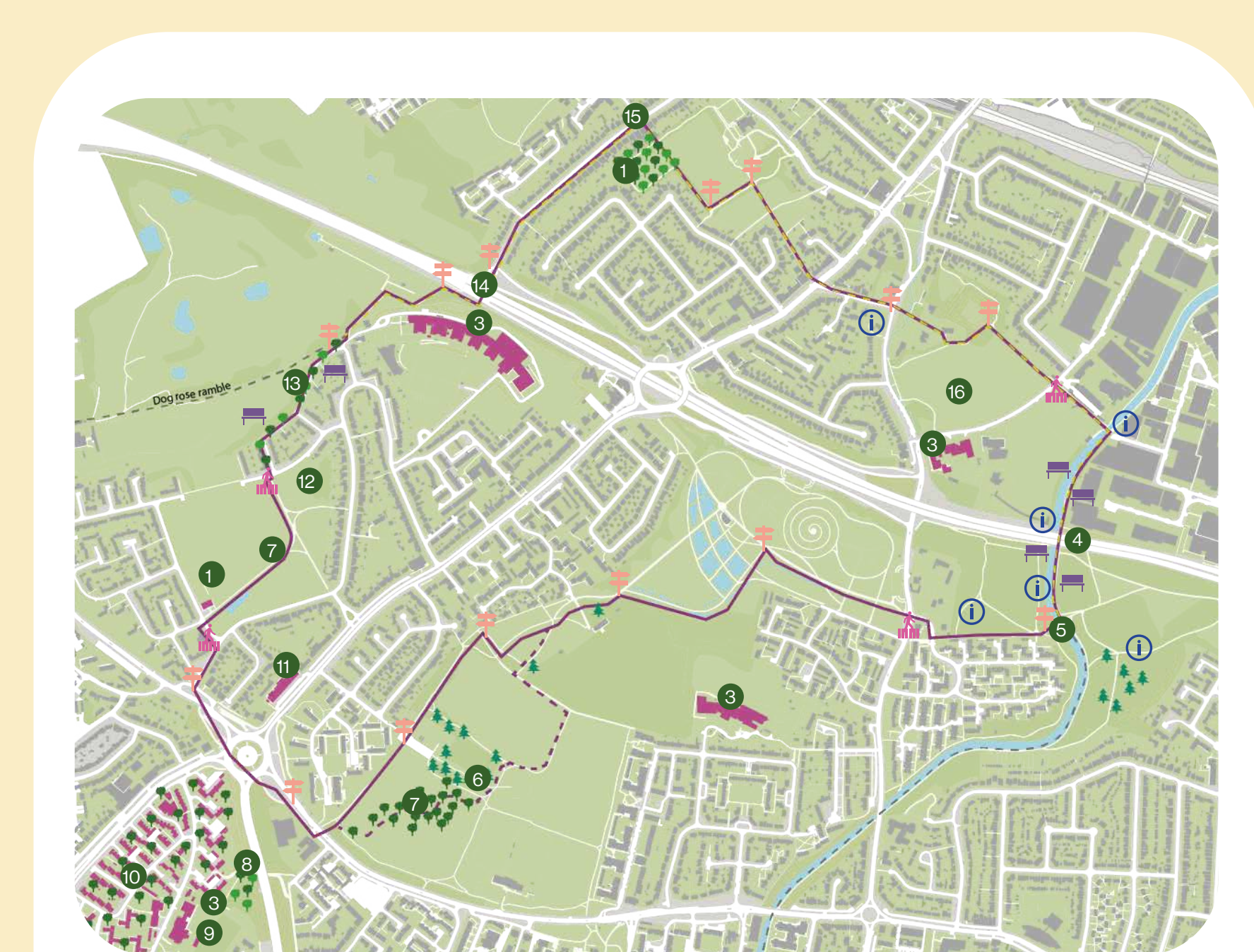
The Green Ring will also physically connect a number of site specific community-led climate risk projects and provide an overarching framework which these projects can 'plug into'.



Site specific projects include edible gardens, a community orchard and a housing estate greening programme which will increase biodiversity of plants and wildlife. Retrofitting housing and commercial properties explore regenerative design. An employment pathway programme will grow the green economy by linking the local workforce with green skills training providers and retrofit contractors. Re-wilding, nature-based play, a foraging trail, and a community urban farm look at developing healthy ecosystems.

The Green Ring will develop holistically, and projects will be delivered incrementally, as the community network, funding opportunities and participation grows.

Ealing has successfully secured funding to implement phase 1 of the Green Ring which will include route wide wayfinding and the development of new wetland ponds in Belvue Park which will be developed and delivered in collaboration with the local community.



CONTACT INFORMATION

email: visionsfornortholt@ealing.gov.uk
website: visionsfornortholt.co.uk