

ROOTS IN THE SKY

A lesson in prioritising nature and community in the way we design buildings and regenerate our cities.



Roots in the Sky is a pioneering, inclusive, HQ office development on London's Southbank, which sets new benchmarks for sustainability and redefines how commercial buildings contribute to our cities.

Inspired by nature, it challenges the idea of a corporate office as a siloed entity, separate from its local community and natural environment.

Going Beyond Net Zero

The project will transform a 1960s courthouse on London's Southbank into a 430,000sqft all-electric BREEAM Outstanding, NABERS 5*, WELL Platinum and the UK's first SITES-accredited building. It will be Net Zero in both construction and operation, whilst delivering a UK-first 1.4 acre rooftop forest and 599.3% biodiversity net gain.



Greater London Authority

"An exemplary scheme that demonstrates what is possible when urban greening is truly considered as a fundamental aspect of site and building design"

23% canopy cover

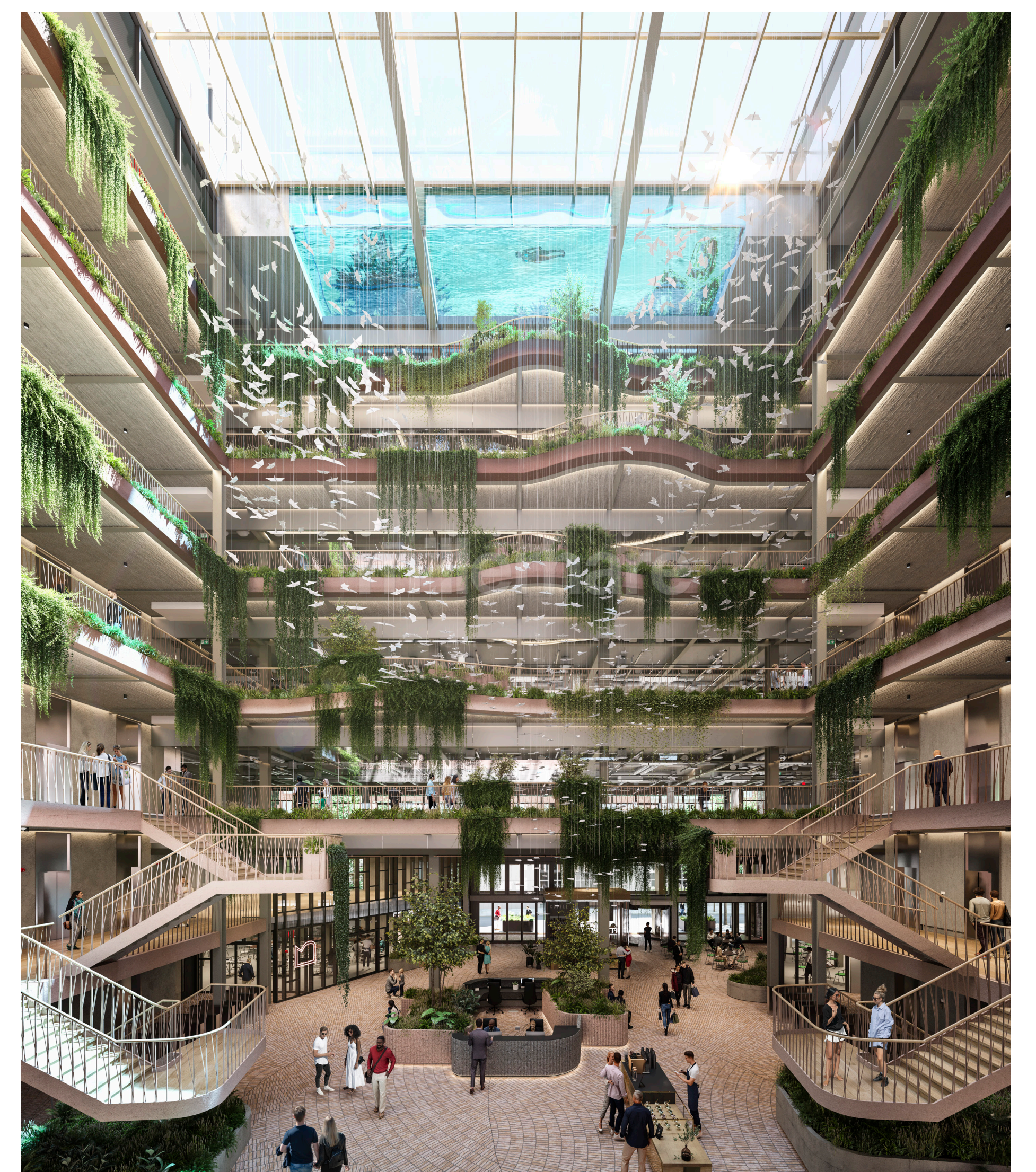
The rooftop's 125 mature trees will live alongside 10,000 plants in 1,000 tonnes of soil, providing 23% canopy cover, exceeding the UN's definition of a forest and reducing both local temperatures and air pollution – crucial benefits of urban greening.

An innovative blue roof system will protect against flash-flooding and contribute towards a 30% target storm water run-off reduction; captured rainwater is wicked up to roots, mimicking the water table and irrigating efficiently.



Collaboration & human connection

The building embeds the opportunity for collaboration, human connection and social impact within a workplace. By making it seamless for tenants to get into nature and work with local community groups on the rooftop, we hope to demonstrate a new normal for socially conscious urban working and commercial development.



Designed with the local community

The rooftop has been designed hand-in-hand with the local community and in response to what they said they wanted – a quiet and accessible green space. The most valuable part of the building – a 10,000sqft garden terrace overlooking the City – will be for community use in perpetuity alongside a 3,000sqft community barn, designed in collaboration with local groups and charities for everyone to use. Together with seedbanks, potting sheds, AV facilities and self-serve tea and coffee.

Working with nature

Habitat-rich log piles, vertical log stacks and dead hedges are being created off-site to develop the introduction of invertebrates that are a fundamental part of a soil's ecosystem, including stag beetles native to south London. They will be carefully installed once the terraces are constructed and soil is in place, along with essential leaf mulch that is being cultivated in advance.

Author: **Clive Nichol**, CEO, Fabrix

Co-authors: **Debbie Whitfield**, Impact Director, Fabrix / **Matt Weaver**, Vice President, Fabrix / **Paul Hicks**, Vice President, Fabrix / **Charlotte Harris** – Co-founder, Harris Bugg Studio

Sheppard Robson, Architect / **Studio Fabrix & Studio RHE**, Concept Design and Vision / **Harris Bugg Studio**, Landscape Design / **Gerald Eve**, Planning Consultant / **AKT II** Structural Engineer, / **Atelier Ten**, MEP & Sustainability Consultant / **Gardiner & Theobald**, Project Manager / **Quantem**, Cost Consultant / **Knight Frank**, Leasing Agent / **Mace & Erith**, Contractors

