



RECONNECTING CITIES WITH NATURE  
LATIN AMERICA AND THE CARIBBEAN

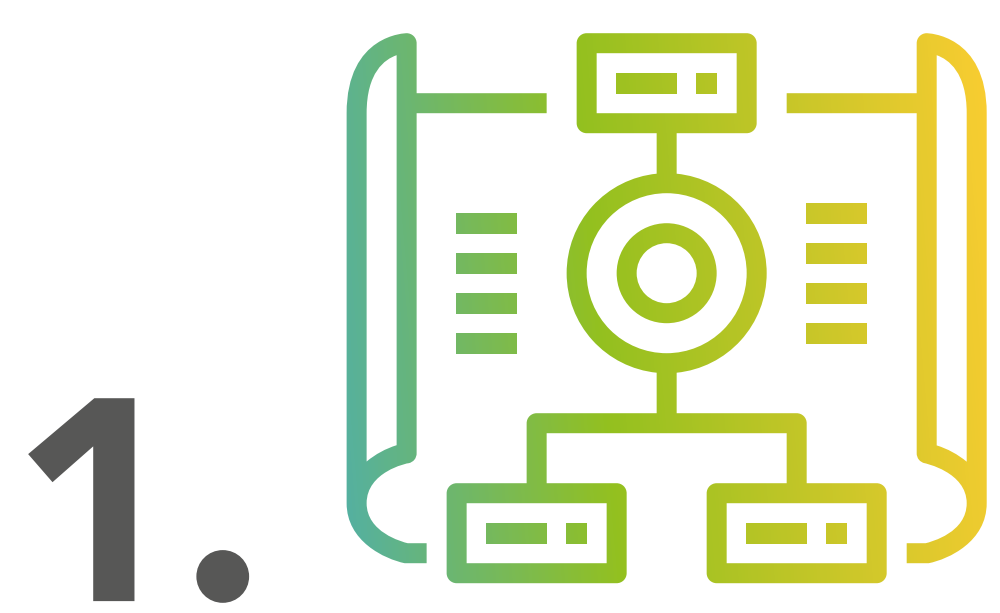
CityAdapt JEM is a project implemented in Jamaica (Kingston), El Salvador (San Salvador) and Mexico (Xalapa), from 2018 to 2023.



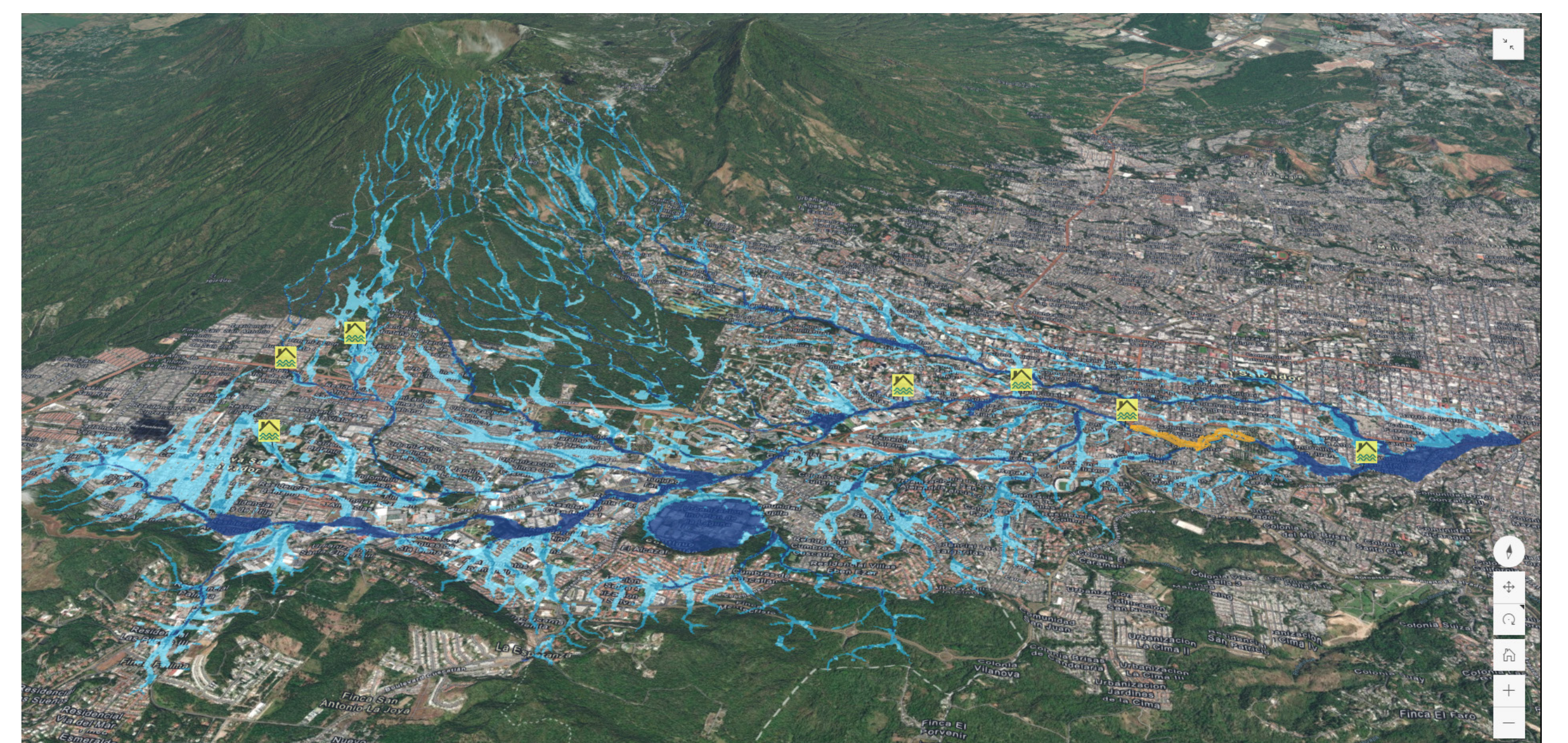
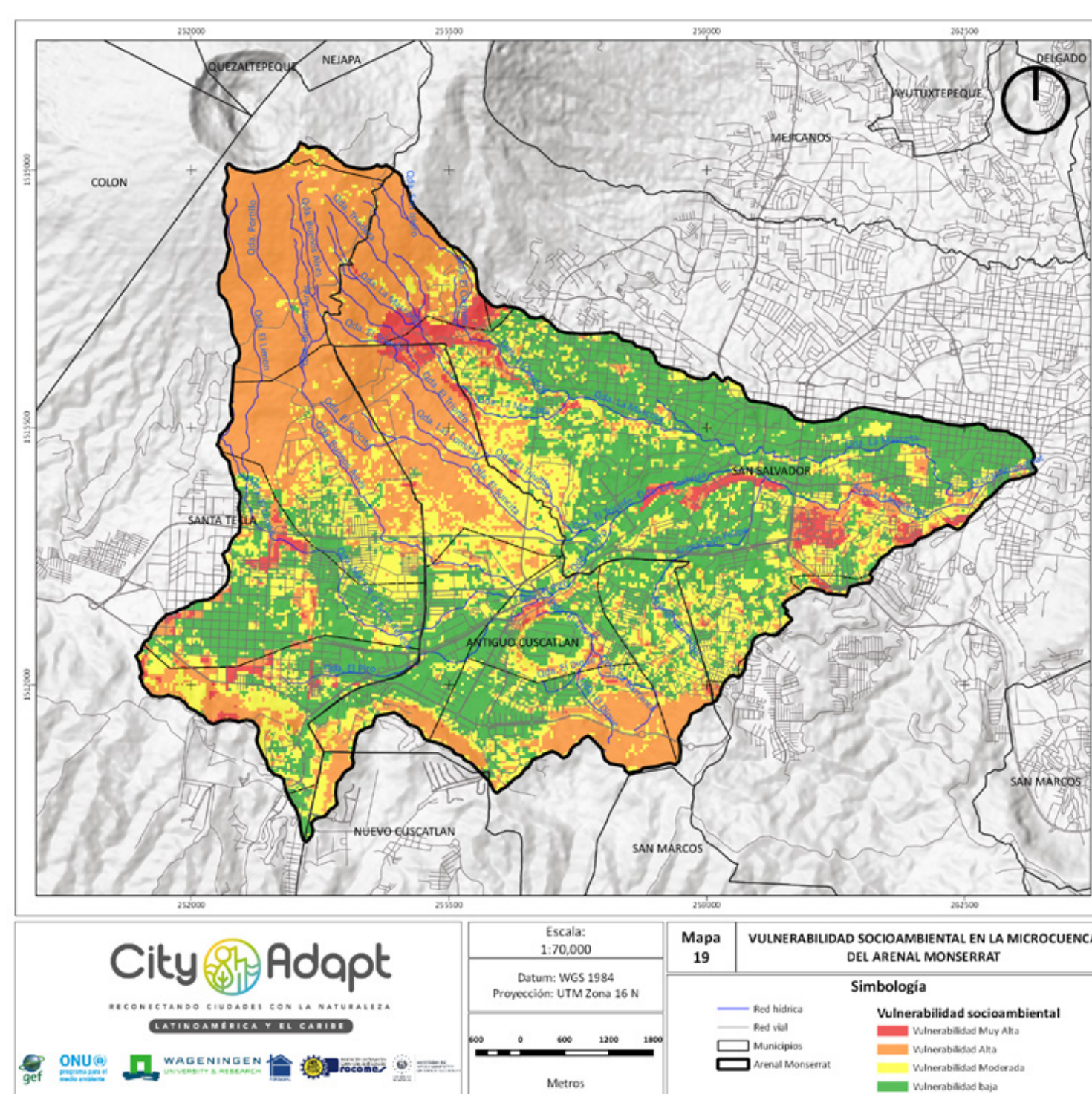
CityAdapt's **goal** is to increase the capacity of governments and local communities to adapt to the effects of climate change by integrating **Ecosystem-based Adaptation (EbA)** into **urban planning**. The project harnesses nature and its **ecosystem services** to build climate resilience of urban communities, providing a variety of social, environmental and economic **benefits**.

The project is made up of three components:

Climate risk and vulnerability assessments



1. Incorporate EbA into urban development planning.



Water runoff modelling in the micro watershed of the Arenal Monstserrat after the 2020 Amanda and Cristobal Tropical Storms in San Salvador.

Among the different EbA interventions implemented:



2. Implement demonstrative EbA measures to reduce the vulnerability of local communities



Infiltration ditches



Reforestation and ecosystem restoration



Rainwater Harvesting System



3. Increase knowledge and raise awareness on urban EbA in the LAC region



Knowledge management and regional capacity building

For more information visit [www.cityadapt.com](http://www.cityadapt.com)